

NOTE: RECOMMENDED MARKERBOARD MOUNTING HEIGHTS

- A) 2'4" FROM FLOOR FOR K-4th GRADE*
- B) 2'8" FROM FLOOR FOR 5th & 6th GRADE*
- C) 2'10" FROM FLOOR FOR 7th & 8th GRADE*
- D) 3'0" FROM FLOOR FOR HIGH SCHOOL*

*(UNLESS OTHERWISE SPECIFIED BY ARCHITECT)

MARKERBOARD
ELEVATION

$3/8" = 1'-0"$

ALUMINUM FRAMED BOARD SIZES
FOR BOTH WIDE (1 1/8") & NARROW (3/8") FRAME STYLE

SIZE BOARD MAKE-UP

- 1' x 1' CONSISTS OF ONE 1' BOARD
- 1.5' x 2' CONSISTS OF ONE 2' BOARD
- 2' x 2' CONSISTS OF ONE 2' BOARD
- 2' x 3' CONSISTS OF ONE 3' BOARD
- 2' x 4' CONSISTS OF ONE 4' BOARD
- 3' x 4' CONSISTS OF ONE 4' BOARD
- 4' x 4' CONSISTS OF ONE 4' BOARD
- 4' x 5' CONSISTS OF ONE 5' BOARD
- 4' x 6' CONSISTS OF ONE 6' BOARD
- 4' x 8' CONSISTS OF ONE 8' BOARD
- 4' x 10' CONSISTS OF ONE 10' BOARD
- 4' x 12' CONSISTS OF ONE 12' BOARD
- 4' x 16' CONSISTS OF TWO 8' BOARDS WITH H-CHANNEL
- 4' x 20' CONSISTS OF TWO 10' BOARDS WITH H-CHANNEL
- 4' x 24' CONSISTS OF TWO 12' BOARDS WITH H-CHANNEL

IMPORTANT NOTICE

FIELD VERIFY ALL DIMENSIONS AND
LOCATIONS PRIOR TO MANUFACTURING

BOARD CONSTRUCTION TYPE:

- MAGNETIC
- NON-MAGNETIC
- CORK (TRAY NOT INCLUDED)

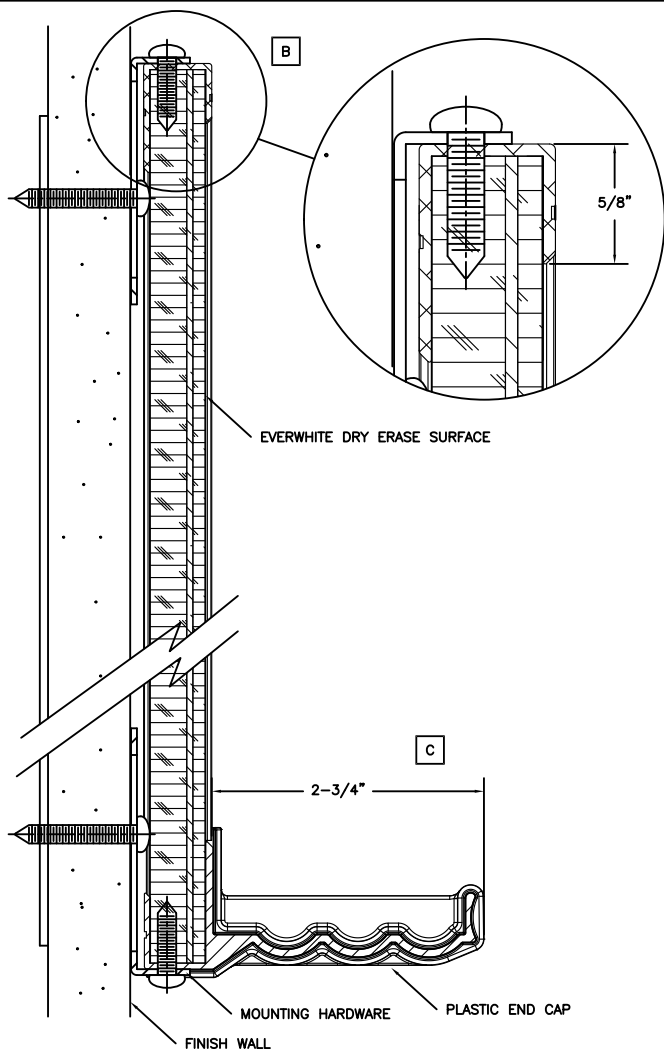
QTY	SIZE	TYPE	LOCATION	ADDITIONAL COMMENTS

BOARD SCHEDULE



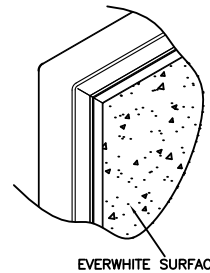
184 RAILROAD DRIVE
WARMINSTER, PA 18974
PH (800) 335-7319
FX (215) 323-4135

CUSTOMER SERVICE AND
SUPPORT (800) 335-7319
WWW.EVERWHITEBOARDS.COM
MADE IN THE USA

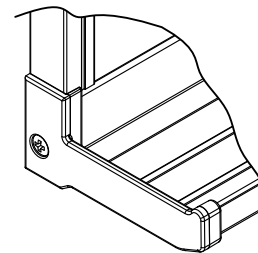


VERTICAL SECTIONS

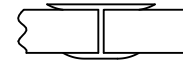
DETAIL VIEWS NOT TO SCALE



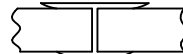
SAFETY FEATURE
WRAPPED AND MITERED
ALUMINUM CORNERS



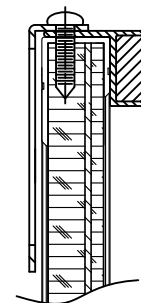
SAFETY FEATURE
DURABLE MOLDED PLASTIC END CAP
COVERS CUT ALUMINUM EDGES



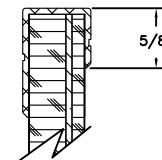
SATIN ANODIZED FLAT H-BAR DIVIDER
FOR JOINTS WITH CORK & MARKER
COMBINATION BOARDS OVER 12'0" WIDE



DRY ERASE RESISTANT PAINTED H-BAR
DIVIDER FOR JOINTS BETWEEN
MARKERBOARDS OVER 12'0" WIDE

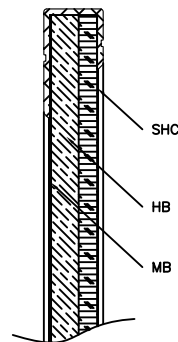


MAPRAIL WITH INSERT



D

B



VERTICAL SECTION OF TACKBOARD

QTY	PART NUMBER / DESCRIPTION	ADDITIONAL COMMENTS

ACCESSORIES SCHEDULE

EVERWHITE COMBINATION BOARDS

- STANDARD SIZES UP TO 4' X 24' WITH VIRTUALLY UNLIMITED CUSTOM SIZES AVAILABLE
- AVAILABLE WITH SELF-HEALING CORK OR VINYL IN MULTIPLE CONFIGURATIONS
- AVAILABLE WITH CUSTOM GRAPHICS IN MULTIPLE CONFIGURATIONS

NOTE:

ALL ALUMINUM IS
6063 ALLOY T-5 TEMPER
COMMERCIAL SATIN ANODIZED CLEAR FINISH
MIN. MAT'L THICKNESS .062"

EVERWHITE MARKERBOARD
FACE/CORE/BACKING

MAGNETIC

- 01 EWS / 24GS / 1/2" HEX / MB

NON-MAGNETIC

- 02 EWS / 1/8" HB / 3/8" HEX / MB

- EWS - EVERWHITE SURFACE
- MB - MOISTURE BARRIER SHEET
- HB - HARD BOARD
- HEX - HEXACOMB
- 24GS - 24 GA. GALVANIZED STEEL

CORK TACKBOARDS
FACE/CORE/BACKING

- 01 1/4" SHC / 1/4" HB / MB

- SHC - SELF-HEALING CORK
- HB - HARD BOARD
- MB - MOISTURE BARRIER SHEET

NOTE:
CORK BOARDS DO NOT INCLUDE TRAY



184 RAILROAD DRIVE
WARMINSTER, PA 18974
PH (800) 335-7319
FX (215) 323-4135

CUSTOMER SERVICE AND
SUPPORT (800) 335-7319
WWW.EVERWHITEBOARDS.COM
MADE IN THE USA